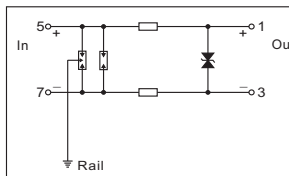


For 24V IS System

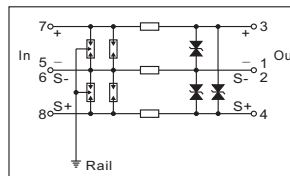
Features

- 12.5mm ultra-thin
- Hot pluggable
- SPD module can be tested individually
- Easy to maintain
- Suitable for AI, AO, DI, DO, RS-232, etc. (L-G isolation voltage > 500V)
- Grounded via DIN 35mm rail

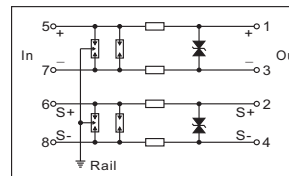
T-24-EX-L



T-24-EX-L3



T-24-EX-L4



Technical Data

	2-wire	3-wire	4-wire
Nominal operating voltage Un	24V	24V	24V
Max. continuous operating voltage Uc	32V	32V	32V
Nominal operating voltage IL	500mA	500mA	500mA
Nominal discharge current In(8/20μs)	10kA	10kA	10kA
Max. discharge current Imax(8/20μs)	20kA	20kA	20kA
Impulse current Iimp(10/350μs)	2.5kA	2.5kA	2.5kA
Total impulse current(10/350μs)	5kA	7.5kA	10kA
Voltage protection level Up(8/20μs)	(L-L,L-G) 60V / 600V	60V / 600V	60V / 600V
Voltage protection level Up(1kV/μs)	(L-L,L-G) 40V / 600V	40V / 600V	40V / 600V
Bandwidth(-0.5dB)	10MHz	10MHz	10MHz
Response time	1ns	1ns	1ns
Resistance	1Ω	1Ω	1Ω
Leakage current	<1μA	<1μA	<1μA
Housing protection grade(accord with IEC60529)	IP 20	IP 20	IP 20
Housing material / inflammability grade(UL94)	PA66 / V0	PA66 / V0	PA66 / V0
Testing standard	GB/T 18802.21 / IEC 61643-21	GB/T 18802.21 / IEC 61643-21	GB/T 18802.21 / IEC 61643-21

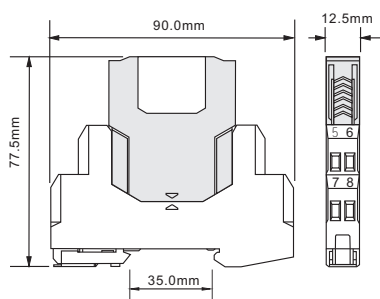
Certification

Intrinsic safety certification	Ex ia IIC T4~T6 Ga	Ex ia IIC T4~T6 Ga	Ex ia IIC T4~T6 Ga
Functional safety certification	SIL3	SIL3	SIL3

Lighting protection performance test

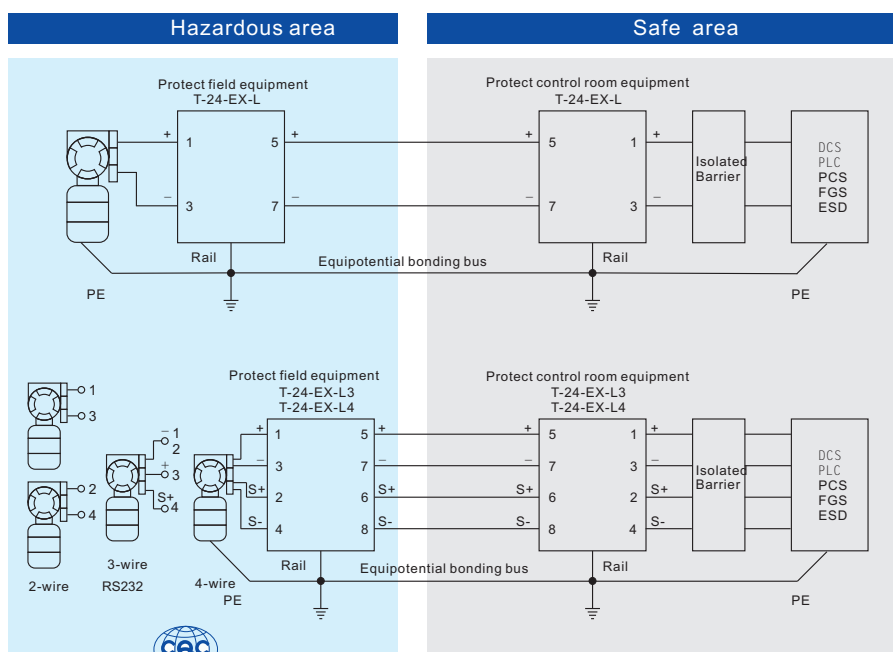
Shanghai Lightning Protection Center

Dimensions



SIL3
IEC61508

Typical application



Shanghai Lightning Protection Center
Lighting protection performance test



National explosion-proof electrical products
Quality supervision and inspection center certification



China Quality Certification Center
CQC Identification